

Peg placed at all new corners,
unless otherwise stated.

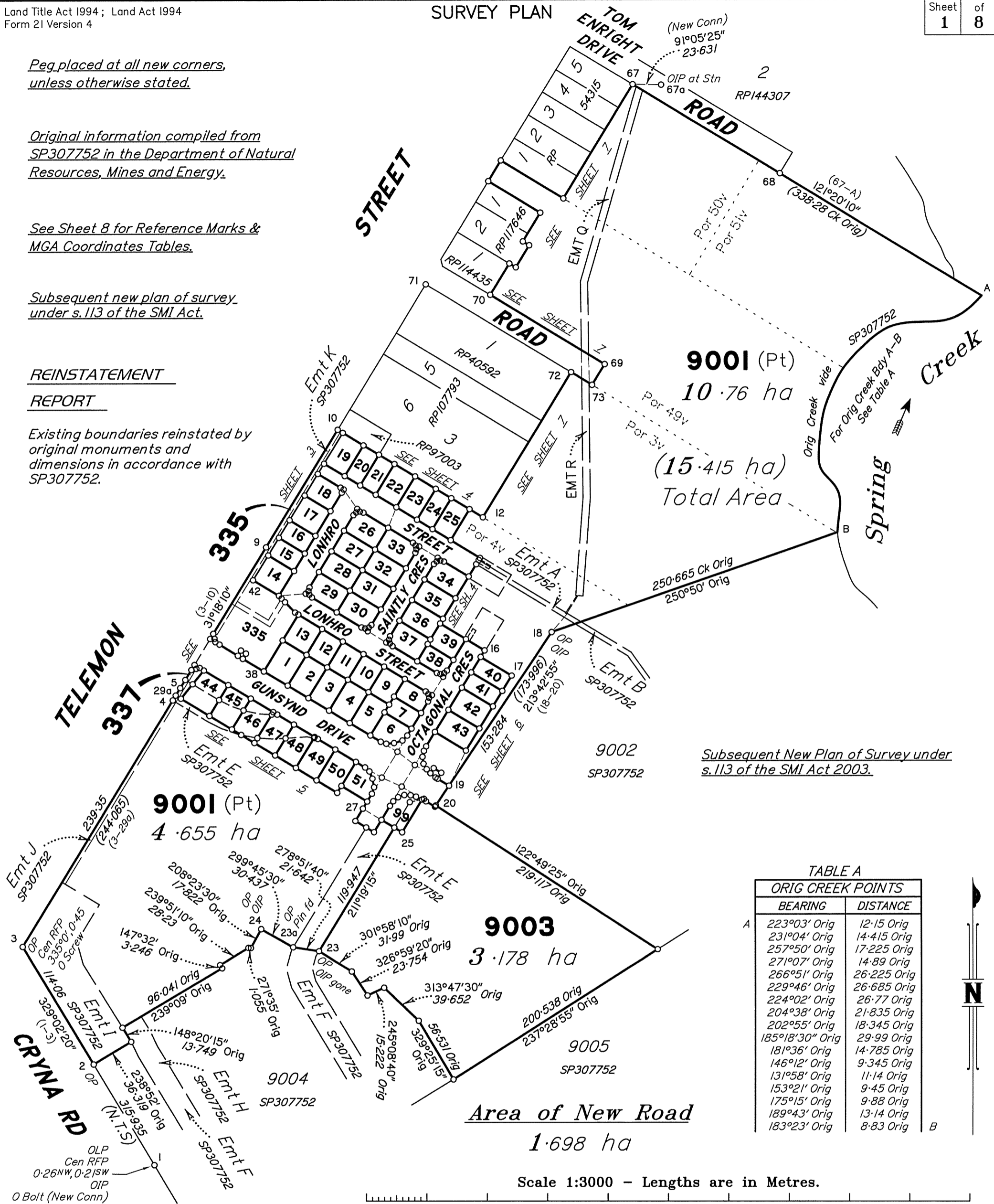
Original information compiled from
SP307752 in the Department of Natural
Resources, Mines and Energy.

See Sheet 8 for Reference Marks &
MGA Coordinates Tables.

Subsequent new plan of survey
under s.113 of the SMI Act.

**REINSTATEMENT
REPORT**

Existing boundaries reinstated by
original monuments and
dimensions in accordance with
SP307752.



9001 (Pt)
10.76 ha
(15.415 ha)
Total Area

9001 (Pt)
4.655 ha

9003
3.178 ha

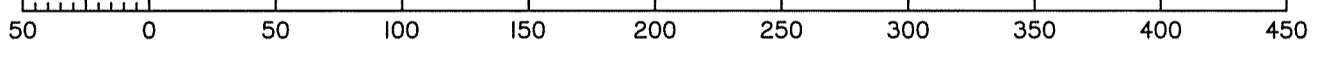
Area of New Road
1.698 ha

Subsequent New Plan of Survey under
s.113 of the SMI Act 2003.

TABLE A

ORIG CREEK POINTS	
BEARING	DISTANCE
223°03' Orig	12.15 Orig
231°04' Orig	14.415 Orig
257°50' Orig	17.225 Orig
271°07' Orig	14.89 Orig
266°51' Orig	26.225 Orig
229°46' Orig	26.685 Orig
224°02' Orig	26.77 Orig
204°38' Orig	21.835 Orig
202°55' Orig	18.345 Orig
185°18'30" Orig	29.99 Orig
181°36' Orig	14.785 Orig
146°12' Orig	9.345 Orig
131°58' Orig	11.14 Orig
153°21' Orig	9.45 Orig
175°15' Orig	9.88 Orig
189°43' Orig	13.14 Orig
183°23' Orig	8.83 Orig

Scale 1:3000 - Lengths are in Metres.



SAUNDERS HAVILL GROUP PTY LTD (ACN 144 972 949) hereby certify that the land comprised in this plan was surveyed by the corporation, by Stephen John SCOTNEY, surveying associate, for whose work the corporation accepts responsibility, under the supervision of Brian Anthony EAGERS, cadastral surveyor, and that the plan is accurate, that the said survey was performed in accordance with the Survey and Mapping Infrastructure Act 2003 and Surveyors Act 2003 and associated Regulations and Standards and that the said survey was completed on 22/09/2020



Authorised Signatory
[Signature]
Authorised Signatory
Date: 1-10-2020

**Plan of Lots 1-51, 99, 335, 337, 9001
& 9003 and Emts L-O, & Q, R & S in Lot
9001 and Emt P in Lot 335**

Cancelling Lots 9001 & 9003 on SP307752

LOCAL GOVERNMENT: SCENIC RIM REGIONAL LOCALITY: BEAUDESERT

Meridian: MGA vide SP307752

Survey Records: No

Scale: 1:3000

Format: STANDARD



SP312144

SAUNDERS HAVILL GROUP

9297 SP312144.DWG

**WARNING : Folded or Mutilated Plans will not be accepted.
Plans may be rolled.
Information may not be placed in the outer margins.**

(Dealing No.)

5. Lodged by

(Include address, phone number, reference, and Lodger Code)

1. Certificate of Registered Owners or Lessees.

I/We SPRING CREEK LAND CORPORATION PTY LTD
A.C.N. 624 791 224
TRUSTEE UNDER INSTRUMENT 719247790

(Names in full)

* as Registered Owners of this land agree to this plan and dedicate the Public Use Land as shown hereon in accordance with Section 50 of the Land Title Act 1994.

~~* as Lessees of this land agree to this plan.~~

[Signature]
DIRECTOR

Signature of *Registered Owners *Lessees

x *[Signature]* DIRECTOR

* Rule out whichever is inapplicable

2. Planning Body Approval.

*
hereby approves this plan in accordance with the :
%

Dated this day of

..... #

..... #

* Insert the name of the Planning Body.
Insert designation of signatory or delegation

% Insert applicable approving legislation.

3. Plans with Community Management Statement :

CMS Number :

Name :

4. References :

Dept File :
Local Govt :
Surveyor : 9297 Stg I

6. Existing		Created		
Title Reference	Description	New Lots	Road	Secondary Interests
51170120	Lot 9001 on SP307752	1-51, 99, 335, 337 & 9001	New Rd	Emts L-S
51170122	Lot 9003 on SP307752	99 & 9003	New Rd	

MORTGAGE ALLOCATIONS

Mortgage	Lots Fully Encumbered	Lots Partially Encumbered
719247797	1-51, 99, 335, 337, 9001 & 9003	

ENCUMBRANCE EASEMENT ALLOCATIONS

Easement	Lots to be Encumbered
719153282 (Emt A on SP307752)	335 & 9001
719153297 (Emt E on SP307752)	44-49, 99, 337 & 9001
719153313 (Emt I on SP307752)	9001
719153315 (Emt J on SP307752)	335, 337 & 9001
719153318 (Emt K on SP307752)	335

BENEFIT EASEMENT ALLOCATIONS

Easement	Lots Fully Benefited	Lots Partially Benefited
719153300 (Emt F on SP307752)	1-51, 99, 335, 337, 9001 & 9003	
719153297 (Emt E on SP307752)	9003	

Easements A, E & J on SP307752 are partially absorbed by new road.

The benefits of Emt E on SP307752 (719153297) are extinguished in Lot 99 in terms of s.87(b) of the Land Title Act 1994.

1-51, 99, 335, 337 & 9003	Por 4v
9001	Pors 3v, 4v, 49v, 50v & 51v
Lots	Orig

7. Orig Grant Allocation :

8. Passed & Endorsed :

By: SAUNDERS HAVILL GROUP PTY LTD
Date: 1-10-2020
Signed: *[Signature]*
Designation: Liaison Officer

9. Building Format Plans only.

I certify that :
* As far as it is practical to determine, no part of the building shown on this plan encroaches onto adjoining lots or road;
* Part of the building shown on this plan encroaches onto adjoining * lots and road

.....
Cadastral Surveyor/Director* Date
*delete words not required

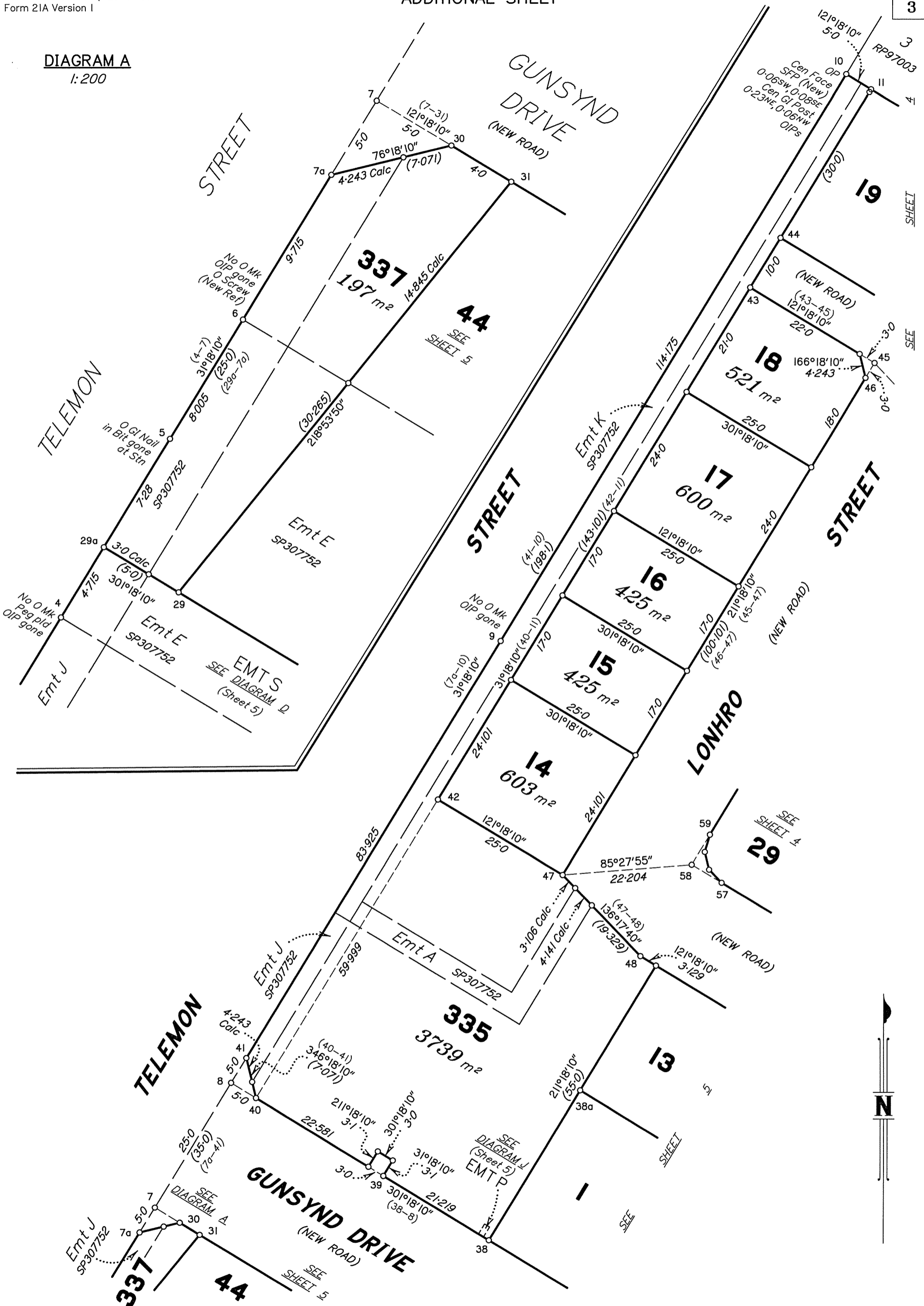
10. Lodgement Fees :

Survey Deposit	\$
Lodgement	\$
..... New Titles	\$
Photocopy	\$
Postage	\$
TOTAL	\$

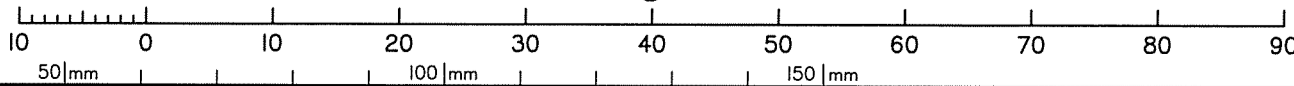
II. Insert Plan Number

SP312144

DIAGRAM A
1:200



Scale 1:600 - Lengths are in Metres.



State copyright reserved.

Insert Plan Number **SP312144**

DIAGRAM B

1:400

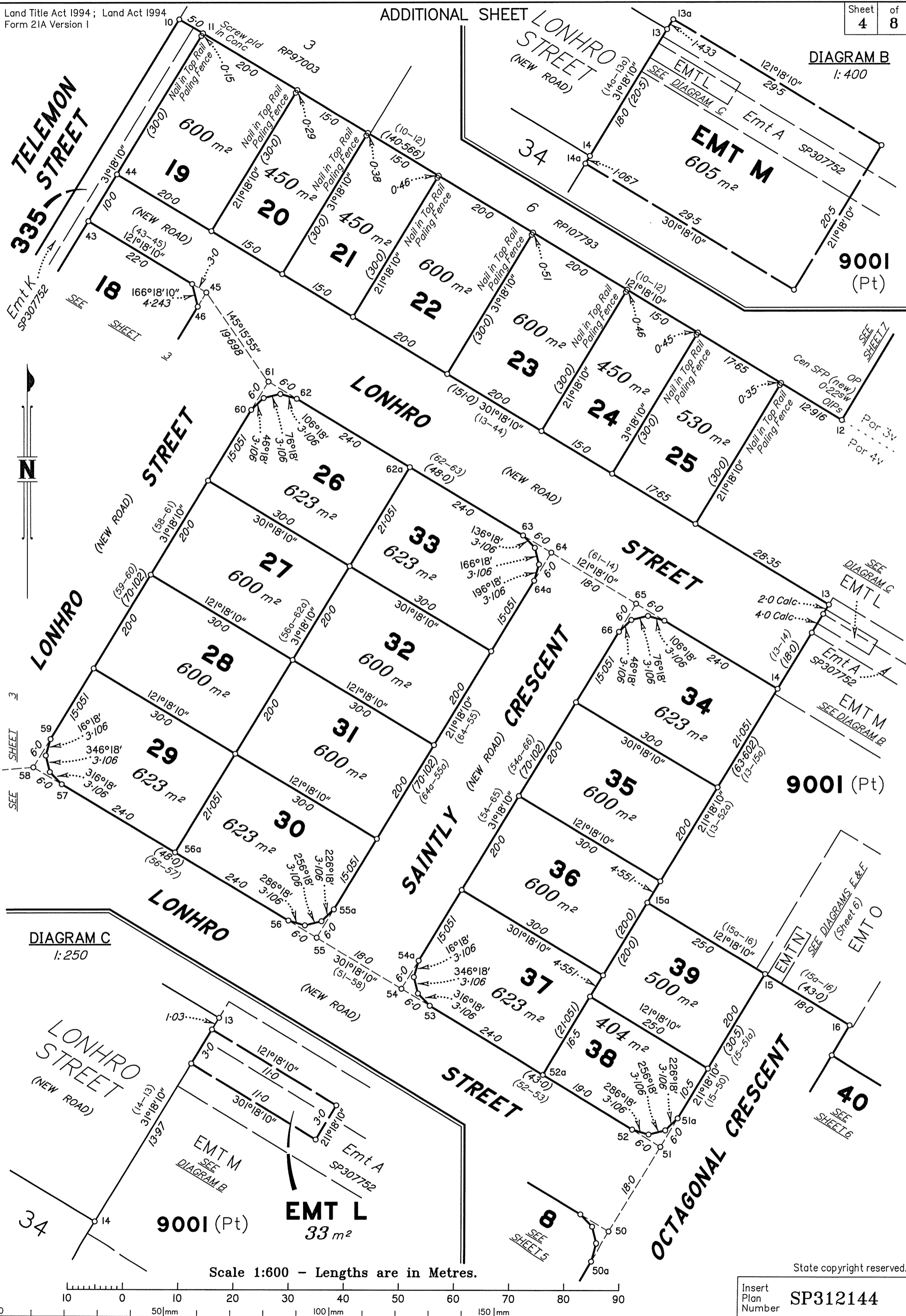


DIAGRAM C

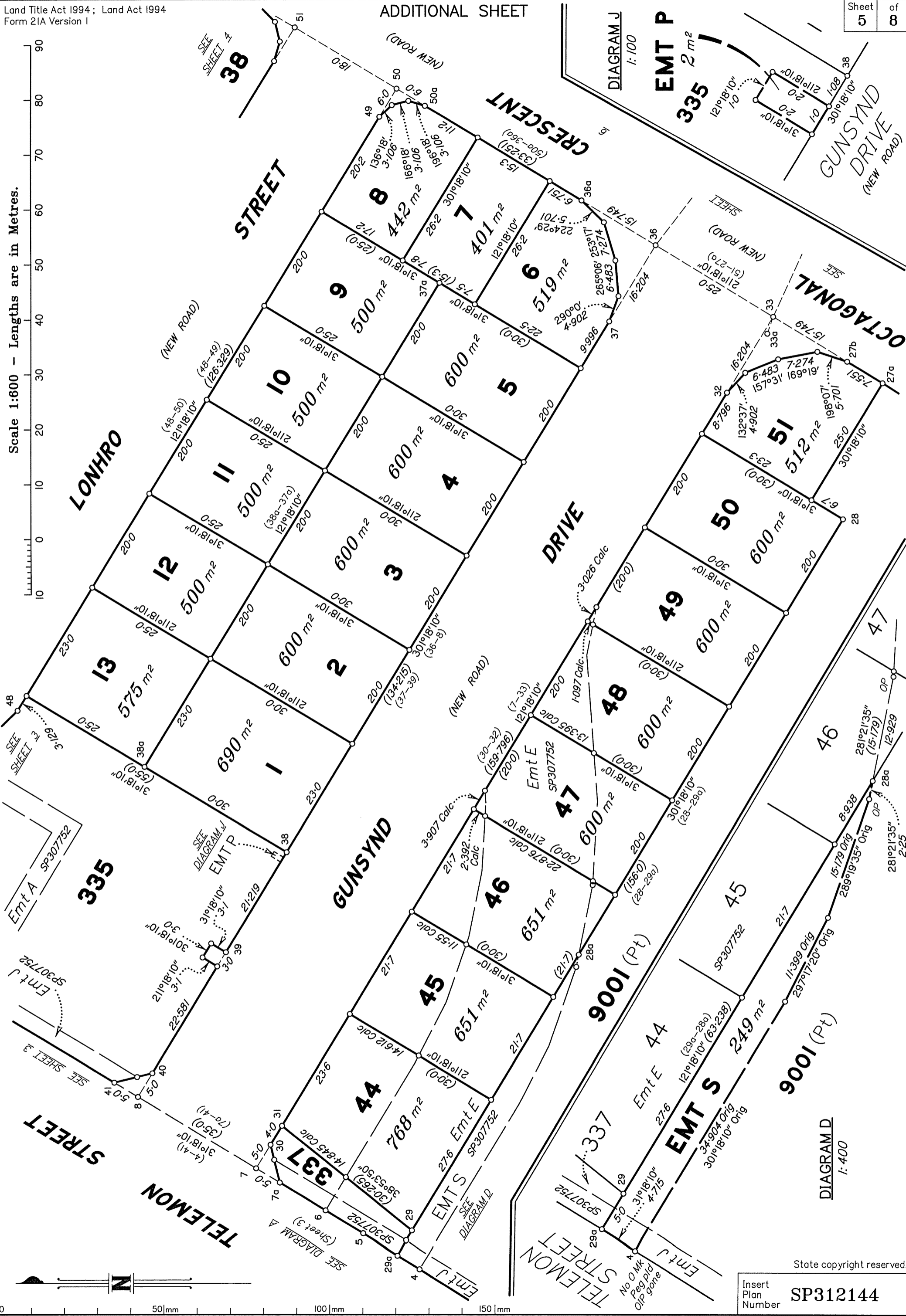
1:250

Scale 1:600 - Lengths are in Metres.

State copyright reserved.

Insert Plan Number SP312144

Scale 1:600 - Lengths are in Metres.



0 50mm 100mm 150mm

State copyright reserved.

Insert Plan Number
SP312144

DIAGRAM E
1:500

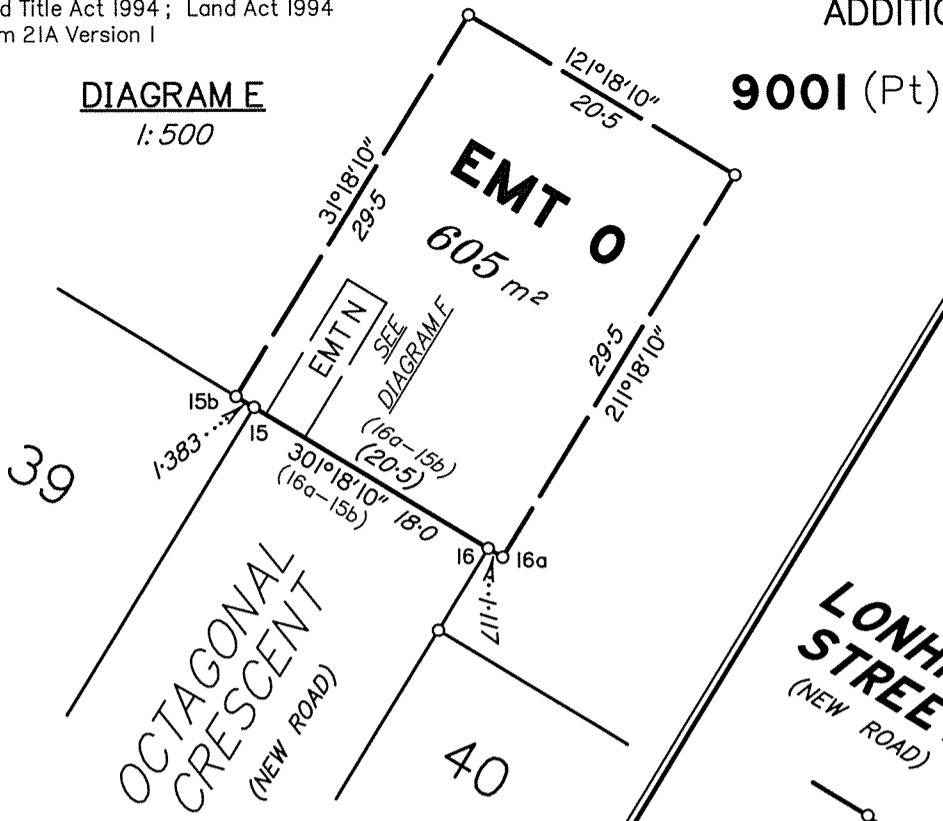
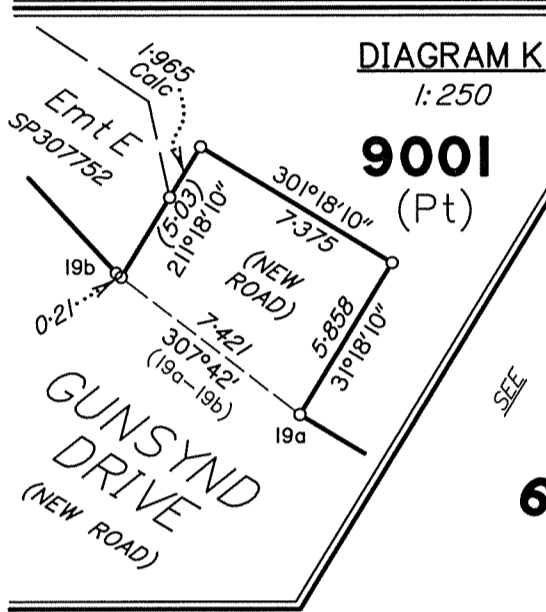


DIAGRAM K
1:250



9001 (Pt)

39

EMT O
605 m²

38

LONHRO STREET
(NEW ROAD)

CRESCENT

EMTN
SEE
DIAGRAM E

EMTO
SEE
DIAGRAM E

9001 (Pt)

40

450 m²

41

450 m²

42

645 m²

43

645 m²

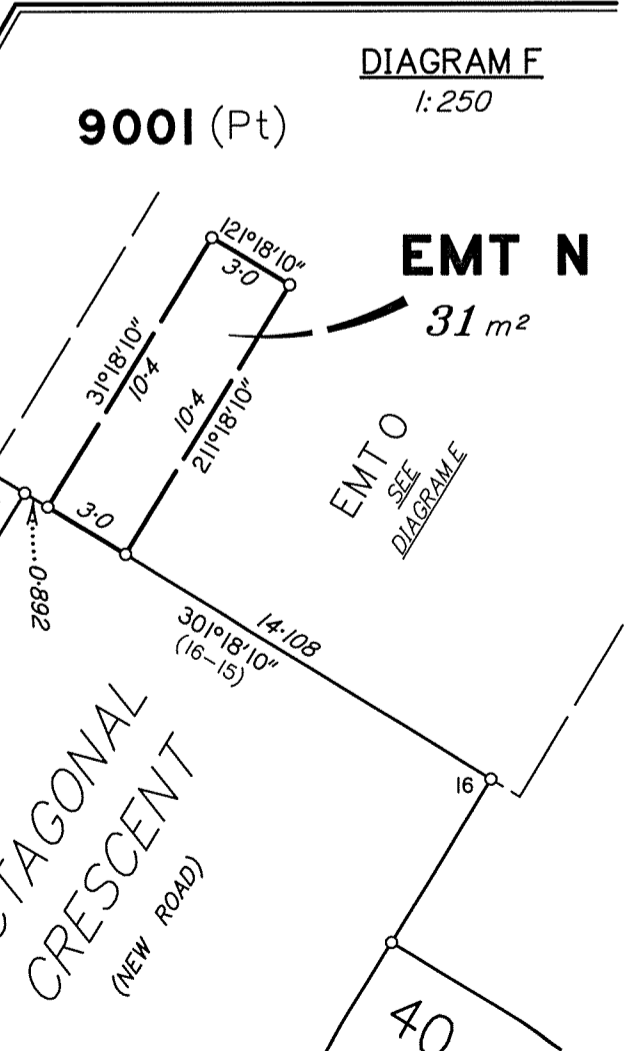
9001 (Pt)

9002
SP307752

GUNSIND
(NEW ROAD)

OCTAGONAL
DRIVE

DIAGRAM F
1:250



9001 (Pt)

EMT N
31 m²

EMTO
SEE
DIAGRAM E

OCTAGONAL
DRIVE

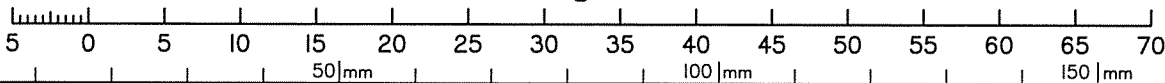
99

569 m²

9003

9001 (Pt)

Scale 1:500 - Lengths are in Metres.



State copyright reserved.

Insert Plan Number SP312144

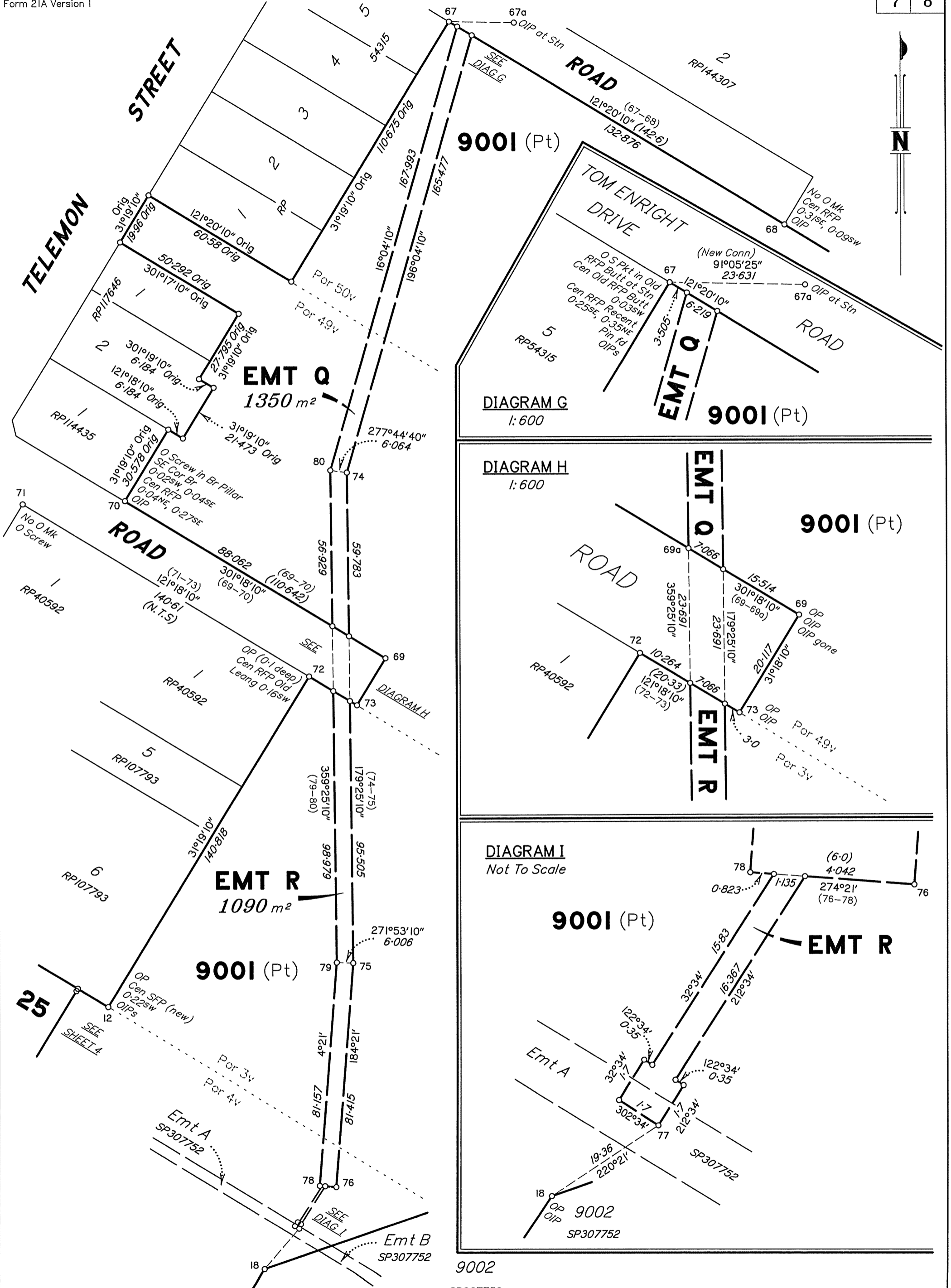
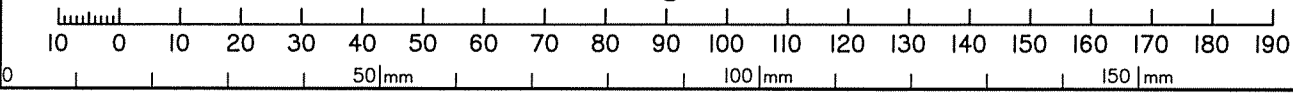


DIAGRAM G
1:600

DIAGRAM H
1:600

DIAGRAM I
Not To Scale

Scale 1:1250 - Lengths are in metres.



State copyright reserved.

Insert Plan Number **SP312144**

REFERENCE MARKS

STN	TO	ORIGIN	BEARING	DIST
1	OIP	SP307752	176°43'	9.585
1	O Bolt in Bit (New Conn)	SP307752	301°26'20"	33.752
3	O Screw in Headwall	SP307752	323°48'	6.115
3	Pin (0.4 deep)		150°18'	6.525
4	OIP gone	SP307752	211°03'	2.085
6	OIP gone	SP307752	209°54'	0.99
6	O Screw in MH Distd (New Ref)	SP307752	282°25'	29.17
7	Screw in Channel		68°38'	8.41
7	Screw in Conc		47°20'	12.3
8	Screw in Channel		168°27'	7.355
8	Screw in Conc		184°05'	13.21
9	OIP gone	SP307752	116°17'	12.465
10	OIP	SP307752	167°05'	0.945
10	Screw in Conc		304°44'	2.58
10	OIP	SP307752	278°27'	7.58
12	OIP	SP307752	87°43'	1.38
12	OIP	SP307752	156°49'20"	2.23
13	Screw in Channel		232°52'	5.47
14	Screw in Kerb		11°36'	5.24
15	Screw in Kerb		148°24'	5.535
16	Screw in Conc		244°36'	4.44
17	Pin		76°02'	1.43
17	Screw in Conc		253°46'10"	48.33
18	OIP	SP307752	217°24'	0.985
19	Screw in Conc		288°48'	11.165
20	Screw in Kerb		325°05'30"	11.91
21	OIP gone	SP307752	301°16'50"	8.665
22	OIP gone	SP307752	31°19'15"	8.39
23	Pin		97°44'	1.57
23	OIP gone	SP307752	33°08'	2.005
23a	Pin fd		82°14'	11.33
24	OIP	SP307752	208°23'30"	2.01
26	Screw in Conc		348°03'	3.515
27	Screw in Kerb		98°02'	5.36
29	Pin		306°15'	0.65
33	Screw in Conc		294°58'30"	3.275
33a	Screw in Conc		At Station	
34	Screw in Conc		193°13'	4.475
35	Screw in Conc		63°18'	3.88
36	Screw in Kerb		321°35'	1.0
38	Screw in Conc		241°30'40"	25.255
45	Screw in Conc		31°38'	3.175
45	Screw in Conc		105°38'	10.745
47	Screw in Channel		100°48'40"	9.725
48	Screw in Conc		44°21'	4.815
50	Pin		276°30'	0.685
50	Screw in Kerb		36°35'	3.735
51	Pin		305°57'	0.79
51	Screw in Kerb		172°03'	3.17
54	Pin		101°57'	1.33
54	Screw in Kerb		269°35'30"	4.375
54	Screw in Channel		241°58'40"	14.995
55	Pin		32°43'	1.375
55	Screw in Kerb		156°54'	4.3
58	Pin		35°32'	1.125
58	Screw in Channel		221°39'	2.585
61	Pin		128°48'	1.62
61	Screw in Kerb		352°15'	1.95
64	Pin		194°39'	1.43
64	Screw in Kerb		90°44'	4.39
64	Screw in Channel		60°33'40"	14.77
65	Pin		219°44'	0.815
65	Screw in Kerb		320°12'	4.64
67	Pin fd		323°09'	2.575
67	OIP (0.4 deep)	SP307752	77°52'	3.19
67a	OIP	IS194496	At Station	
68	OIP (0.4 deep)	SP307752	33°32'40"	6.915
69	OIP	SP307752	354°38'	13.11
69	OIP gone	IS194496	284°01'55"	18.295
70	OIP	SP307752	148°47'	5.025
71	O Screw in Conc	SP307752	314°12'40"	28.795
73	OIP	SP307752	351°21'	1.28
74	Pin		98°34'	1.62
74	Screw in M/H		279°22'	2.615
75	Punch Mk in Bolt in M/H		275°16'	3.645
76	D/Hole in Bolt in M/H		310°22'	4.055
77	Pin		161°54'	6.065

M.G.A. COORDINATES GDA-94

STATION	EASTING	NORTHING	ZONE	P.U.	LINEAGE	METHOD	REMARKS
33a	499 061.150	6 903 000.492	56	0.049	Derived	Network RTK	Screw
67a	499 296.275	6 903 573.161	56	0.049	Derived	Network RTK	OIP